

# Claw replacement Procedures

ARV20102 ARV20104 RV20103 RV20104

## STEP 1: OPEN PULLING HEAD (SLEEVE)

1. Turn **CLOCKWISE** to open
2. Proceed with this instruction **ONLY** if claws are broken and needs replacement



## STEP 2: PULL OUT CLAW ASSEMBLY AND REPLACE CLAW

1. Turn Claw Assembly **COUNTER-CLOCKWISE** until it can be pulled out
2. Open Claw Assembly with screwdriver and wrench as shown
3. Replace broken Claw with the new one (**#14-11** on exploded diagram\*)
4. Tighten the claw assembly (reference to step2)

\* Call 1-877-693-8665 or Contact us by [online form](#)

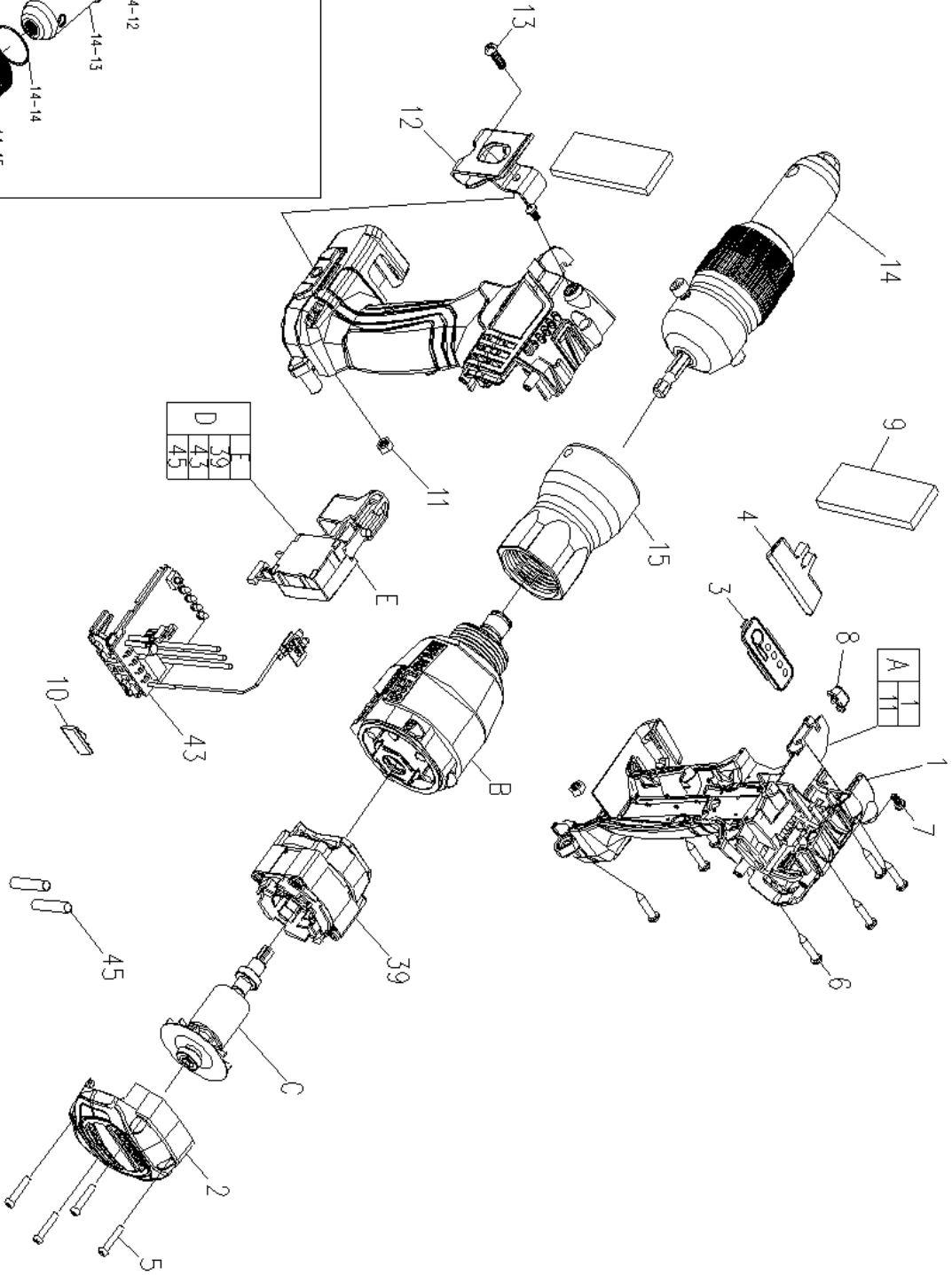
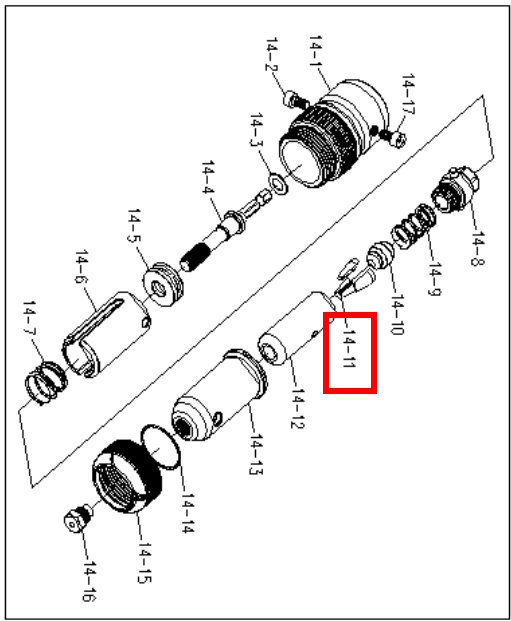
#14-11 Ordering number: **59931420**



### STEP 3: PUT BACK PULLING HEAD (SLEEVE)

1. Insert battery to tool. Switch tool to FORWARD. Pull Trigger to tighten Sleeve to tool
2. Examine tool by triggering tool in low speed (FORWARD and BACKWARD). Ensure it runs smooth and then test on rivets





D	
E	59
	43
	45

A	

Item	Description	Ordering #	Q'ty
1	Enclosure	30031915	1
2	Rear cover	30231054	1
3	Panel	30731295	1
4	Reversing Actuator	30731547	1
5	Screw	20930333	4
6	Screw	20930159	8
7	Screw	20930123	2
8	Led Cover	30630935	1
9	Foam	30430170	2
10	Soft Pad	30630910	1
11	Nut	20930101	2
12	Hook	20031631	1
13	Screw	20930208	1
14	Aluminum Pull Nail	22130737	1
39	Stator Assembly	10430715	1
43	Electronics Assembly	RS13N1275	1
45	Thermal Shrink Tube	10230027	2
A	Enclosure Assembly	RS99I0814	1
B	Gear Box Assembly-1	RS99I0657	1
C	Armature Assembly (W/Motor Gear)	RS99I0654	1
D	Stator Switch Assembly	RS99V0102	1
E	Switch Assembly	RS99I0815	1
14-4	Screw	59931423	1
14-8	Screw	59931423	1
14-9	Spring	59931422	1
<b>14-11</b>	<b>Claw</b>	<b>59931420</b>	<b>3</b>
14-12	Rivet tube	59931421	1
14-16	Rivet mouth 4.8	59931426	1